

# South Gloucestershire Landscape Character Assessment

## Annex II: Strategic Viewpoints

### South Gloucestershire Council

**Final Draft Report for Adoption Chapter 23**

Prepared by LUC

September 2024



Version	Status	Prepared	Checked	Approved	Date
1	Draft Method and Pilot	E White L Jewitt	K Davies	K Davies	03.04.2023
2	Draft Report	L Jewitt V Kakar	E White	K Davies	16.05.2023
3	Draft Report	E White L Jewitt	E White	K Davies	14.07.2023
4	Final Draft	E White L Jewitt	E White	K Davies	01.11.2023
5	Final Draft (updated following New Local Plan Phase 3 consultation)	L Jewitt	E White	K Davies	12.06.2024
6	Final Draft Report for Adoption	L Jewitt	E White	K Davies	11.09.2024



**Land Use Consultants Limited**

Registered in England. Registered number 2549296. Registered office: 250 Waterloo Road, London SE1 8RD. Printed on 100% recycled paper

# Contents

## **Chapter 23** **169**

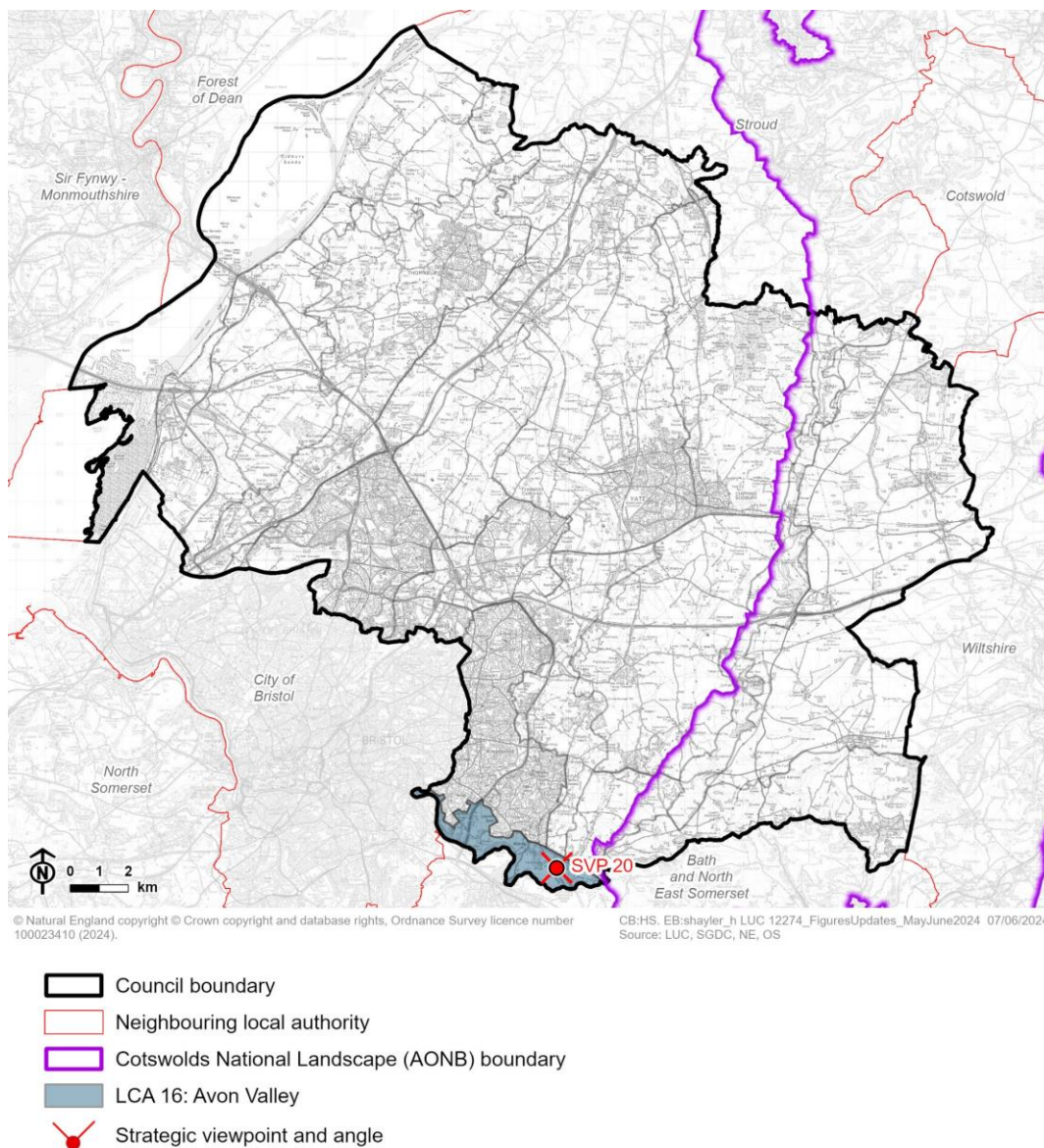
Strategic Viewpoint 20: Bristol to Bath Railway Path (Avon Riverside Station)

Characteristics	176
Summary	177

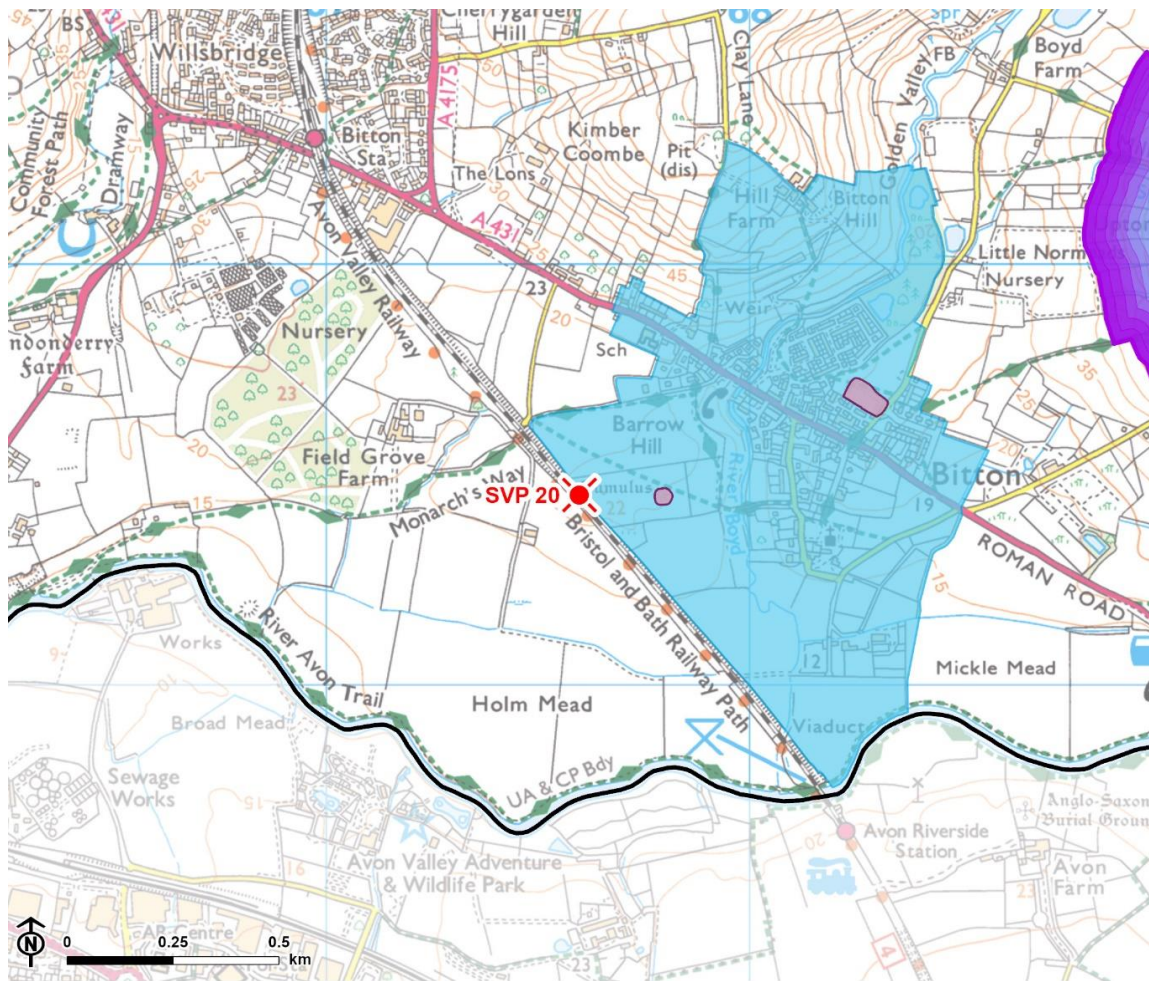
## Chapter 23

# Strategic Viewpoint 20: Bristol to Bath Railway Path (Avon Riverside Station)


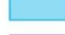

Figure 23.1: Location of Strategic Viewpoint 20 and landscape character context

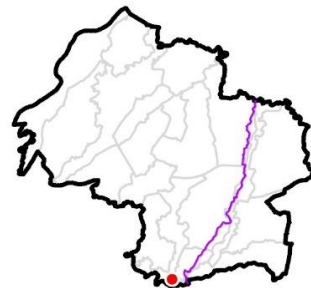


**Figure 23.2: Detailed map of the location of Strategic Viewpoint 20**



© Natural England. © Historic England. Contains Ordnance Survey data © Crown copyright and database rights, Ordnance Survey licence number 100023410, 2024.

-  Council boundary
-  Cotswolds National Landscape (AONB) boundary
-  Conservation area
-  Scheduled monument
-  Strategic viewpoint and angle



## Viewpoint Information

**Grid reference:** ST 67599 69451

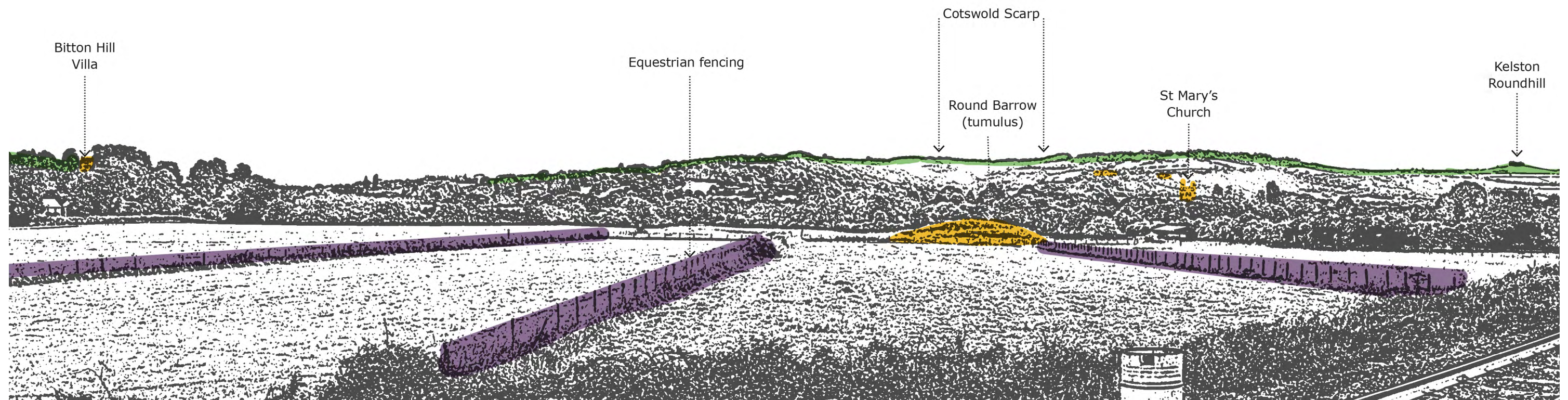
**View location:** On the Bristol to Bath Railway Path, approximately 600m south-west of Bitton.

**View direction:** Panoramic views across LCA 16: Avon Valley and LCA 11: Golden Valley .

**Relationship with Visually Important Hillside (VIH):** The viewpoint is not located along a VIH, however it provides views towards the southern extent of the Oldland Ridge and Cotswold Lower Slope VIH.

**Experienced by:** Pedestrians and cyclists on the Bristol to Bath Railway Path (National Cycle Network Route 4).

Figure 23.3: View Composition of Strategic Viewpoint 20 (view east)



Key landscape feature

Landmark / historic feature

Detractive feature

Figure 23.4: View Composition of Strategic Viewpoint 20 (view west)

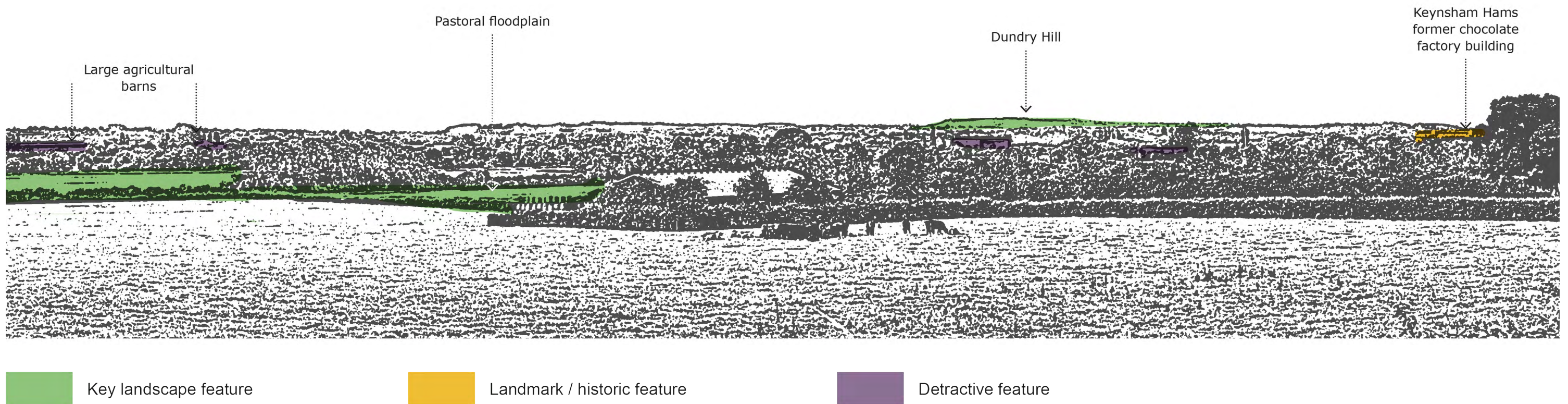




Figure 23.5: Full Panoramic Photograph of Strategic Viewpoint 20



Strategic Viewpoint 20: Bristol to Bath Railway Path



Strategic Viewpoint 20 (continued)



Strategic Viewpoint 20: (continued)



Strategic Viewpoint 20 (continued)

## Characteristics

### Popularity, access and facilities

- The viewpoint is located along a disused railway, one of many historic industrial relics in the Avon Valley which is now a highly valued recreational asset. The Avon Riverside Station (located one kilometre to the south-east of the viewpoint) is symbolised as a visitor attraction on Google Maps and is likely to attract many visitors as a result.
- The viewpoint location is noted in LCA 16: Avon Valley, which states that there are *“occasional local and distant views over the adjacent floodplain and river”* from the railway path, including *“views towards distinctive landform features within the CNL, Ashwicke Ridges and Oldland Ridge, and historic features including the Bitton and Upper Cheyney Conservation Areas.”*
- The viewpoint is publicly accessible via the Bristol to Bath Railway Path (National Cycle Network Route 4) and the River Avon Trail locally promoted route (public footpath PBN/67/30). The Avon Valley Heritage Railway Line runs alongside the bike path with a station close to the viewpoint (Avon Riverside Station).

### Relationship with the Cotswolds National Landscape (CNL)

- The viewpoint is not located within the CNL but provides views east towards Prospect Stile (within Bath and North East Somerset).

### Quality, value and features of the view

- The viewpoint provides panoramic (360°) views north-east across the Avon Valley (characterised by the flat Avon floodplain alongside the meandering form of the River Avon) and towards the rolling hillsides of the Ashwicke Ridges and Oldland Ridge which enclose the Golden Valley, and south-east towards the

## Chapter 23 Strategic Viewpoint 20: Bristol to Bath Railway Path (Avon Riverside Station)

Cotswold hills, including the wooded hillside of Prospect Stile, and Kelston Roundhill (both within Bath and North East Somerset).

- The view west extends across the Avon Valley floodplain towards Keynsham, the flat, low-lying landscape contrasting with the elevated rolling landform of the Cotswold hills to the east.
- The viewpoint is located on the southern edge of Bitton Conservation Area and provides views north towards the settlement and its setting within the Golden Valley. To the north-east, Upton Cheyney Conservation Area is nestled on the Cotswold Scarp, and is well-integrated into the landscape by the surrounding mature vegetation.
- The tower of St Mary's Church (Grade I listed) in Bitton Conservation Area (0.6km away) forms a landmark feature and is prominent within the low-lying floodplain. The former chocolate factory (now residential apartments) at Keynsham Hams is another landmark feature seen in views to the north-west (2.5km away).
- An ancient tumulus (round barrow) is located 0.2 kilometres from the viewpoint and contributes to the sense of time depth in the landscape.

## Summary

The Bristol to Bath Railway Path (Avon Riverside Station) viewpoint is categorised as a SVP as it meets most of the criteria to some extent. It is a popular and well known viewpoint and likely to attract many visitors; it is noted in the South Gloucestershire Landscape Character Assessment as being a natural observation point from which to appreciate the landscape; it is located on a national cycle path and promoted footpath; it provides an appreciation of the Cotswold National Landscape; and it provides a 360° panoramic view that takes in the notable landscape features of the Avon Valley, Ashwicke Ridges, Oldland Ridge, Cotswold hills (including Prospect Stile and Kelston Roundhill), the Bitton and Upper Cheyney Conservation Areas, and the landmark features of St Mary's Church and the former chocolate factory at Keynsham Hams.

Report produced by LUC

# Report produced by LUC

## **Bristol**

12th Floor, Colston Tower, Colston Street, Bristol BS1 4XE

0117 929 1997

bristol@landuse.co.uk

## **Cardiff**

16A, 15th Floor, Brunel House, 2 Fitzalan Rd, Cardiff CF24 0EB

0292 032 9006

cardiff@landuse.co.uk

## **Edinburgh**

Atholl Exchange, 6 Canning Street, Edinburgh EH3 8EG

0131 202 1616

edinburgh@landuse.co.uk

## **Glasgow**

37 Otago Street, Glasgow G12 8JJ

0141 334 9595

glasgow@landuse.co.uk

## **London**

250 Waterloo Road, London SE1 8RD

020 7383 5784

london@landuse.co.uk

## **Manchester**

6th Floor, 55 King Street, Manchester M2 4LQ

0161 537 5960

manchester@landuse.co.uk

## **landuse.co.uk**

Landscape Design / Strategic Planning & Assessment

Development Planning / Urban Design & Masterplanning

Environmental Impact Assessment / Landscape Planning & Assessment

Landscape Management / Ecology / Historic Environment / GIS & Visualisation